

# **SLOP** **BUSTER**<sup>TM</sup>

MAILBOX PROTECTION SYSTEM



Engineered to deflect the impact of snow, ice and slush from passing snowplows that can bring down your mailbox.

[www.SlopBuster.com](http://www.SlopBuster.com)

## DESIGNED FOR EASY INSTALLATION, LONG LIFE AND SAFETY

**Heavy-Gauge Steel**  
with powder-coated  
corrosion resistant finish.

**High Quality Rust  
Resistant Zinc  
Plated Fasteners**  
for quick easy assembly.

**V-Shaped Top  
Plate Assembly**  
deflects snow, ice and  
debris away from mailbox.

**Rear Plate**  
reinforced ribbed  
construction.

### SAFETY FEATURE

SlopBuster™ System is engineered to minimize injury to a driver and passengers when a vehicle hits a mailbox.

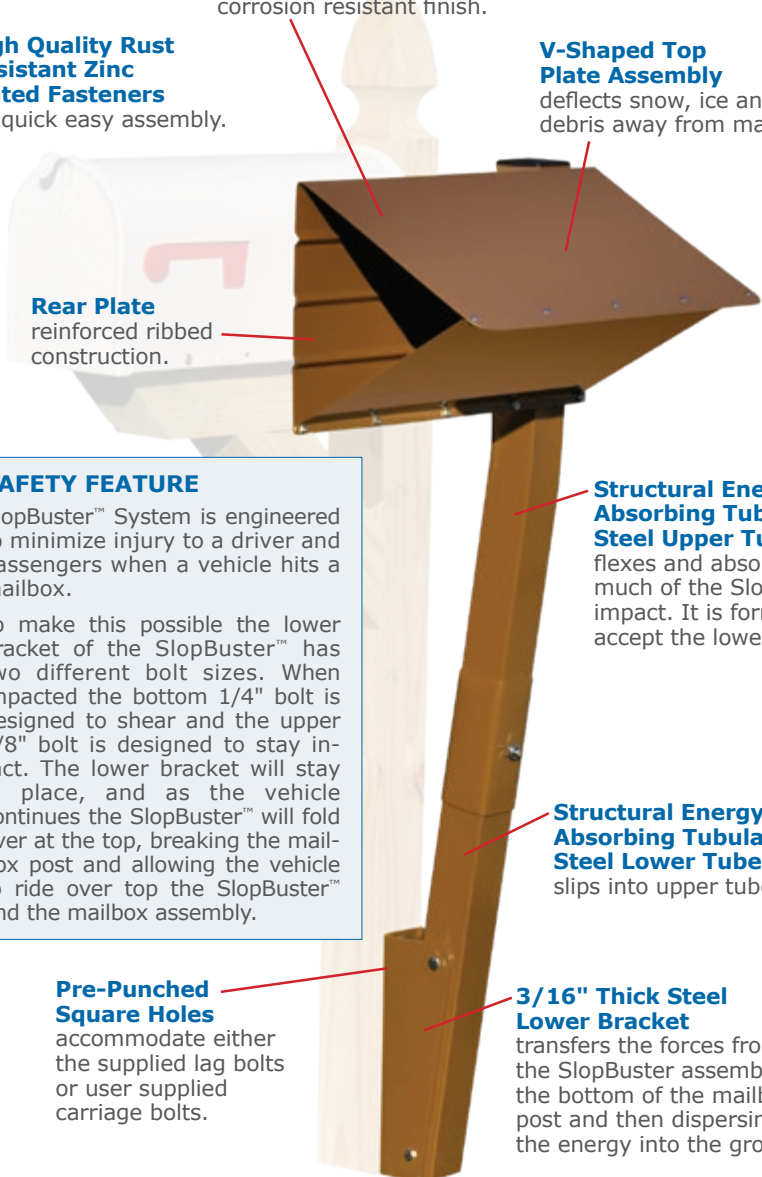
To make this possible the lower bracket of the SlopBuster™ has two different bolt sizes. When impacted the bottom 1/4" bolt is designed to shear and the upper 3/8" bolt is designed to stay intact. The lower bracket will stay in place, and as the vehicle continues the SlopBuster™ will fold over at the top, breaking the mailbox post and allowing the vehicle to ride over top the SlopBuster™ and the mailbox assembly.

**Structural Energy  
Absorbing Tubular  
Steel Upper Tube**  
flexes and absorbs  
much of the Slop  
impact. It is formed to  
accept the lower tube.

**Structural Energy  
Absorbing Tubular  
Steel Lower Tube**  
slips into upper tube.

**Pre-Punched  
Square Holes**  
accommodate either  
the supplied lag bolts  
or user supplied  
carriage bolts.

**3/16" Thick Steel  
Lower Bracket**  
transfers the forces from  
the SlopBuster assembly into  
the bottom of the mailbox  
post and then dispersing  
the energy into the ground.



## HOW SLOPBUSTER™ WORKS.

The SlopBuster™ patented design both deflects and absorbs the forces of snow and slush thrown from snowplows. This Slop, as we call it, can hit a typical mailbox with 400 to 600 pounds of force, causing damage to mailbox.



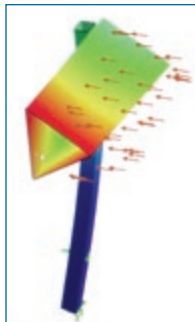
### Engineered To Re-Direct Stress And Impacts.

The thick-walled steel post is angled inward toward the base of the mail box 4" x 4" post just above ground level.

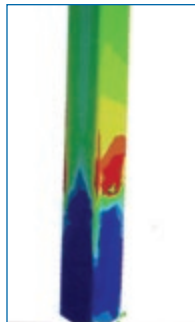
This angled design helps drive the forces through the steel post to the base of the mailbox wood post. This area is the sturdiest place for attaching the heavy weight steel support bracket.



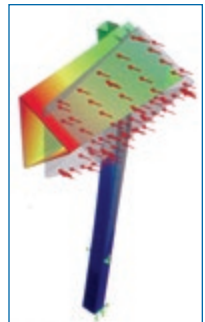
*Designed for easy attachment to base of mailbox mounting post.*



*Heavy-Duty Steel Panels engineered to withstand up to 600 pounds of force.*



*Drives impact forces through unit to sturdiest part of mailbox post.*



*Engineered to deflect the forces of plowed ice and snow.*



## Designed for easy installation and professional results.

SlopBuster™ works with any mailbox. It is a rugged, heavy-duty system that comes with all the parts you need for quick, do-it-yourself installation. It's built tough to stand up against those powerful blasts that can bring down your mailbox. Be prepared this season, invest in a SlopBuster™.



## SlopBuster™ adds a clean look to your community.

Eliminate those snow barriers constructed by residents in your community to protect mailboxes from damage. Most are homemade monstrosities that don't work. Install a SlopBuster™ Protection System, designed to work & eliminate roadside clutter.



STANDARD MAILBOX



PLASTIC MAILBOX

FOR MORE INFORMATION OR TO ORDER:

[www.SlopBuster.com](http://www.SlopBuster.com)

SlopBuster™ distributed by Erie Products, 202 East Fox Rd., Sandusky, OH 44870  
419-433-8293 | [sales@eriep.com](mailto:sales@eriep.com)